



---

# Welcome to Camping Beau Rivage



Welcoming booklet

---

## SUMMARY:

Welcome.....	3
Map of the Campsite.....	4
Our wooden chalets.....	5
Our lodge tents.....	6
Our large pitches.....	6
Our services.....	7
Caravans and Motorhomes.....	8
Bins.....	9
Local restaurants and bars.....	11
The Markets.....	12
Celebrate with the local festivals !.....	13
Historical Heritage.....	14
1 Week in the Béarn.....	18
Not to be missed !.....	19
Activities for kids and adults.....	22
Walks for all the family !.....	24
Bike and walking tour.....	28
Practical Information.....	30
Others.....	31

---

# Welcome



We are happy to welcome you to Camping Beau Rivage de Navarrenx. We sincerely hope that you will love it here as much as we do and be able to have a relaxing and resourcing holiday.

Enjoy spending time on the campsite but also in our magnificent region, of which we are so proud, and discover mountain plains, the Atlantic coast, and a region rich with culture and history.

And most importantly! Do not wait any longer to experience the great outdoors, to immerse yourself in the local way of life, and join in the traditional festivals.

We wish you a very happy holiday!

Clara et Stéphane

---

# Map of the campsite



The campsite is in Navarrenx, at the heart of the Bearn and 40 km from the city of Pau. We are in walking distance from the fortified village and labelled one of “The Most Beautiful Villages of France”. It’s also a stop on Saint-Jacques de Compostelle Way, the popular pilgrim walk that takes you all the way to Santiago in Spain. At reception you will find further information and walking tours, to allow you to discover this beautiful village.

# Our wooden chalet

**Chalet – High Comfort 5 - 6 people**



**Chalet – High Comfort 4 - 5 people**



**Premium Chalet – 4 to 6 people**



**Classic Chalet – Comfort at low price –  
1 to 2 people**



**Classic Chalet – Low price in family –  
1 to 4 people**



Please note:

It is possible to rent sheets on request  
at the reception.

## Our lodge tents



### Tente lodge –

- 2 Rooms
- Equipped kitchen
- Separate toilet
- Communal shower block for the shower and warm water
- Terrace

## Our large pitches

### High Comfort pitch 110 to 140 m<sup>2</sup>



- Stabilised ground (half gravel / half grass)
- Electricity, drainage, water

### Comfort pitch 110 to 140 m<sup>2</sup>



- Grass floor
- Electricity

Good to know: WI-FI is offered. The toilets are easily accessible, including one adapted for people with reduced mobility.

## Our services



- Chalet Pizza: pizza and chips during the high season

- Caravan Bar: local ice creams, waffles, crisps, beers, local wines...



- Swimming pool open from 9am to 9pm

- Pétanque

- Children's playground



- Free tennis court (keys at reception)

- Fishing in the river Gave d'Oloron and picnic beside the river (come to reception to ask directions to the beaches)



- Laundry : washing machine and tumble dryer (token at reception)

Free WIFI

---

# Caravans and Motorhomes



- **Storage** : Undercover caravans / motorhomes storage
- Chemical toilets at the campsite
- **Servicing and repairs** : A problem with your caravan or motorhome ? Call Kris.



Website: <https://www.caravanhelpabroad.com/>

Phone: 06 69 48 53 98



## Bins

Recycling: We think recycling is very important. It is why we have different types of bins available for you:

- Yellow bin: paper, plastic bottle, packaging (no yoghurt pots)
- Glass bin
- Bin for dog's poo bag (in closed plastic bags only)
- Black bin : Everything else
- Battery bin

**OUR ENVIRONMENTAL POLICY**

We are committed to an ecological approach in order to reduce the impact of the campsite on the environment and to preserve this holiday destination. This commitment is reflected in a number of measures in several areas, including

- 

**ENERGY:** Solar water heaters, low energy light bulbs, time switches. The installation of Velux windows in the bathrooms eliminated the need for daytime lighting.
- 

**WATER:** Rainwater harvesting, low-flow taps, water-saving washing machines. Installation of a circulation pump in the sanitary block to reduce water consumption.
- 

**WATERING:** Four 1000L water harvesters collect rainwater. The choice of new plant species has been designed to reduce watering requirements as much as possible.
- 

**MAINTENANCE:** Most of our cleaning products are eco-labelled, and we strive to use as little as possible
- 

**WASTE:** The waste system at the campsites has been completely overhauled, and we are constantly seeking to encourage and improve waste recycling.

We were a pilot site for the Eco-Camps project when the campsite was renovated. This allowed us to complete the necessary work in a way that had the least possible impact on the environment.



Here in Navarrenx we enjoy a privileged environment that must be protected. We need your help to avoid wasting water and energy and to recycle as much waste as possible. We would like to thank you for your cooperation and wish you a very green stay !



# Beau Rivage

CAMPING

## LES ÉCO-GESTES POUR RÉDUIRE VOS DÉCHETS SUR BILTAGARBI.FR

ZURE HONDAKINEN MURRIZTEKO EKO-JESTU  
GEHIAGO AURKITU BILTAGARBI.FR-EN

## VOS CONSIGNES DE TRI !

ZURE BEREIZKETA  
KONSIGNAK !

### À TRIER BEREIZTEKOAK



### À JETER BOTATZEKOAK



### À RAPPORTER EN POINT DE VENTE INITIAL ITZULTZEKOAK



### À DÉPOSER ERAMATEKOAK

Déchets encombrants  
et dangereux

► DIRECTION DÉCHETTERIE

Hondakin arriskutsu  
eta trabagamentzat,  
hondakindegira joan



### À TÉLÉCHARGER TELEKARGATZEOA

#### À JETER ? À RECYCLER ?

POUR TOUT SAVOIR, TÉLÉCHARGEZ

L'APPLI GUIDE DU TRI



Bereizketa konsigna egokia  
errexki aurkitu eta bereizketa  
gune hurbilena lokalizatu  
« GUIDE DU TRI » aplikazioa  
dohainik telekargatuz.



---

## Local restaurants and Bars



- ★ Le Commerce - place des Casernes - 05 59 66 22 54
- ★ Le P'tit Bistrot - 4 Place d'Armes - 05 24 35 13 18
- ★ Bar des Sports - rue Saint-Antoine - 05 59 66 50 63
- ★ Taverne Saint-Jacques – Place Bertrand Dufresne - 05 59 66 25 25
- ★ L'Estanquet - 50 rue Saint-Germain - 05 59 66 56 52
- ★ Bar des Sports - rue Saint-Antoine - 05 59 66 50 63
- ★ Bar Le Dahu - 23 rue Saint-Germain
- ★ Les Canons - Place des Casernes
- ★ Shakespeare Brasserie - Place Darralde - 05 59 66 52 14
- ★ L'Enchanté : 35 rue Saint Germain – 05 59 66 29 32
- ★ La Pizzeria des Remparts – Place des Casernes – 05 59 66 29 70

### Further afield:

- ★ Auberge de la fontaine (at Laàs - 64390) - Place de l'Eglise - 05 59 38 20 20
- ★ Chez Germaine (at Geus-d'Oloron - 64400) - 18 Route de Josbaig - 05 59 88 00 65
- ★ La Légende (at Sauveterre - 64390) - 5 Rue de l'Abbé Duplech – 09 86 68 99 47
- ★ Auberge Claverie (at Audaux – 64190) – 2 Place de l'Estanquet – 05 59 66 03 80

## The markets :

Find all the markets in the area such as :

Monday morning: Saint Jean Pied de Port

Tuesday morning: The farmers' market in Salies-de-Béarn in July and August

Wednesday morning: Navarrenx

Thursday morning: Salies-de-Béarn

Saturday morning: Local producers' market in Salies de Béarn and Sauveterre de Béarn

Sunday morning: Navarrenx market from mid-June to early September



**The weekly market is every Wednesday all year, with an extra Sunday market during the summer. Find the market in the centre of the village, at Place de Marie, from 9am until midday!**

---

# Celebrate with the local festivals!

## July 2021

- Every Tuesday at Navarrenx: “Mardis Musicaux”
- In the middle of the month at Làs : Transhgumances musicales”
- In the middle of the month at Burgaronne : “Marché producteur”
- At the end of the month at Salies-de-Béarn : “Fête des Sottises”
- At the end of the month at Sauveterre-de-Béarn : “Les Médiévales”

## August 2021

- Every Tuesday at Navarrenx : “Mardis Musicaux”
- Beginning of the month at Salies : “Fêtes de Salies”
- Second week of July at Navarrenx : “Fêtes de Navarrenx”
- Middle of the month at Salies-de-Béarn : “La piperadère”
- End of the month at Sauveterre-de-Béarn : “Foire de la Blonde d’Aquitaine”
- End of the month at Laàs : “Les 3 heures de la brouette”

## September

- End of the second week of september at Salies-de-Béarn : “ La fête du sel ”
- Middle of the month at Sauveterre-de-Béarn : “Les fêtes de Sauveterre”

## October

- End of the second week of October at Laàs : “La fête du maïs”

THE CALENDAR OF EVENTS IN BEARN AND IN THE BASQUE COUNTRY :

<https://pratique.tourisme64.com/animation/>

---

# Historial Heritage

## Navarrenx :



### ***Presentation :***

Navarrenx is a 14th century trading town, due to its strategic position. Between 1538 and 1545, Henri II d'Albret, grandfather of the future Henri IV, viscount of Béarn and king of Navarre, was concerned about securing his border and wished to protect himself from a possible Spanish or French invasion. He called on an Italian military engineer who was responsible for building the first bastioned place in France. These ramparts are said to be impregnable!

Jeanne d'Albret, Henri's daughter, imposed Protestantism on her lands, which was now autonomous and reformed. Charles IX then sent his troops to annex Bearn. All the towns capitulated except Navarrenx, which retained its sovereignty for another half-century.

## Walks in Navarrenx



The tourist office has prepared 3 walks around the village, each one indicated along the route.

In yellow: “A fortified village”.

In orange : “The tour of the walls”.

In purple : “Beside the River”.

Find the map and directions in the Welcome Guide 2021 of Béarn des Gaves

### Salies de Béarn :

Don't miss the salt city where many events take place, the salt festival, the festival of the sottises, the salting markets, the enthronement ceremony! Don't forget to visit the salt museum and the saltworks in the heart of the town, the Bayaà crypt and the casino. If you are in the mood for cocooning, go to the thermal baths of Salies to relax!

### Sauveterre de Béarn :

Located at the gateway to Béarn, this medieval town is surrounded by impressive ramparts, you can also see the Legend Bridge, the magnificent Monréal Tower and below, the beach on the banks of the Gave d'Oloron.

### Gurs :

Gurs, 6 km from Navarrenx, was home to one of the largest internment camps in France between 1939 and 1945. The visit to the camp is free and open to the public. There are guided tours organised by the Tourist Office.

Address: Impasse d'Ossau, 64190 Gurs

### Hospital Saint Blaise :

This village is full of history with an exceptional heritage. The church of St Blaise Hospital is a Unesco World Heritage Site, so don't hesitate to visit it.

### Monein :

Monein is a must for its southern gothic heritage. You can visit the church of Saint-Girons, classified as a historical monument in 1913.





### Morlanne :

This magnificent and typically Béarn village offers a rich history with its castle, its fortified church and its Belluix house, classified as Historic Monuments!

### Pau :

Here are the sites not to be missed: The funicular, the Beaumont Park, the Fine Arts Museum, the Lescar Cathedral, the Beaumont Palace, the Bernadotte Museum, the National Museum and the Domaine du Château de Pau and finally the Boulevard des Pyrénées.



### Oloron-Sainte-Marie :

Designated a City of Art and History, you can discover the Sainte-Marie Cathedral, the Grède Tower, the Maison du Patrimoine and the Notre-Dame Crypt!

# 1 week in the Béarn :

Saturday: Enjoy the campsite with the swimming pool or the tennis (key at the reception)

Sunday : **Sauveterre**

Visit of the Monréal Tower, the island of La Glère  
Feet in the water, ice cream in hand: enjoy the  
the private beach on the banks of the river “Au fil de l'eau”.



Monday : **Audaux : A trip on water**

Rafting, canoeing or ink paddle on the Gave.  
(Experience Béarn : 0559660405)

Tuesday: Choice of day hike in the beautiful Pyrenees or visit to the beaches and  
typical villages of the Basque Country.

Wednesday: **Navarrenx**

Local producers' market in the morning  
Visit of Navarrenx and its ramparts (download the Terra Aventura  
application to discover Navarrenx through an amazing treasure hunt).

Thursday: **Laàs**

Go and conquer the Castle of Laàs (3 hours of games and adventures and  
have a picnic in the magnificent park of the Castle)



Friday : **A day in Salies-de-Béarn**

Take the little train, visit the Bayaà crypt, the salt museum,  
the salt museum and the saltworks. Don't forget the thermal baths!

## Not to be missed !

### Rafting 64

In the heart of the Bearn region and 10 minutes from the campsite, come and let off steam with Rafting64! Take part in numerous activities (rafting, canoeing, bubble football, paintball, big sup, paddle, archery tag, tyrolienne). Reduced prices for our holidaymakers: ask at the reception for the promo code.

Address : 2 bis Pouyet, 64190 Montfort

Phone : 05 59 66 04 05

Mail : [contact@rafting64.com](mailto:contact@rafting64.com)

### Le château des énigmes à Laàs

Located 15 minutes from the campsite, experience a great 3-hour treasure hunt inspired by the famous Roman "The Three Musketeers". In the Top 10 of the French favourite amusement parks. For children from 4 years old.

Phone : 05 59 65 00 34

Address : Bourg, 64390 Laàs

### Le Petit Train d'Artouste

This is an activity not to be missed, for young and old alike! At 1H30 from the campsite, enjoy the Petit train d'Artouste in the Ossau valley. The highest train in Europe offers you an original and unique ride to discover and admire the wonders of the Pyrenees.

Mail : [contact@artouste.fr](mailto:contact@artouste.fr)

Address : Fabrèges, 6440 Larun.

## Terra aventura

With the "Terra aventura" application to download onto their phone, the family is ready for the adventure. With clues to find, riddles to solve and a treasure to search for, young and old alike will be able to discover the villages of Navarrenx and Làs through a treasure hunt!

## Au Fil de l'Eau

Located in Sauveterre-de-Béarn (22 min from the campsite) and at the foot of the ramparts of the medieval city of Sauveterre. An ice cream in your hand, your feet in the water, come and refresh yourself on the banks of the Gave d'Oloron.

Address : Chemin du moulin 64390, Sauveterre-de-Béarn  
Phone : 06 80 51 42 11 / 05 59 38 96 95

## La passerelle d'Holzarte

This impressive footbridge overlooks the Olhadubi Gorge by 180 metres.

Don't miss this spectacular natural site, the most visited in the Western Pyrenees.



## Le chemin de la mature

This is a spectacular hike that starts at the Cebers Bridge car park.

It lasts 4 hours over 7.4km.

You can take the path dug in the rock, be careful with the void...

This hike is not suitable for children.

---

## Les grottes de Bétharram

You can visit the caves of Betharram on foot, by boat or by train!

Address : Chemin Léon Ross, 65270 Saint-Pé-de-Bigorre

## Les grottes de la Verna

These caves are located 1 hour from the campsite and offer an extraordinary adventure!

It is an activity accessible to all!

Address: Espace accueil Arrakotchepia, Quartier Calla, 64560 Sainte-Engrace

Phone : 06 37 88 29 05

## And also... Les grottes de Sare

1h40 away, discover these prehistoric caves located in a typical Basque village. Also visit the village of Sare, which is classified, like Navarrenx, "Les Plus Beaux Villages de France".

For more information, don't hesitate to come to the reception!

## Les gorges de Kakuetta

Explore the Kakuetta Gorge in a setting of lush vegetation and turquoise waters. Take advantage of this unique setting in the Basque Country where you and your family are guaranteed a change of scenery!

Open from 15th march to 15th November

Free parking nearby

Tickets can be purchased at the bar at the entrance to the site

Duration of the walk: between 2 and 3 hours

Contact : 05 59 28 60 83 - [gorges@kakuetta.fr](mailto:gorges@kakuetta.fr)



## Activities for kids and adults

### Aquatic Parc - Aqua Béarn

Located in the heart of the Béarn countryside, 30 minutes from Navarrenx (28 km from the campsite), the park offers a wide range of water attractions such as a river with buoys and waves, slides, boats and also a buffer boat!

Here is their contact information : 05 59 39 20 75

Address : 64400 Oloron-Sainte-Marie

### Parc Acro Jungle

This 1000 m<sup>2</sup> children's playground with 8 play areas welcomes children from 0 to 12 years. This secure structure offers slides, trampolines, labyrinths, giant legos, minidisco.

Here is their contact : 05 59 21 84 06

Address : 64121 Rue des Eaux Bonnes, 64121 Serres-Castet

### La pêcherie d'Aurit

La pêcherie d'Aurit is an unique place to discover animals in freedom (donkeys, ponies, dwarf goats, sheep, peacocks). It is an ideal animal park for a family outing! Numéro de

Phone : 06 72 66 62 01

Address : Chemin de Latabaille 64370, Hagetaubin

Mail : [contact@lapecheriedaurit.fr](mailto:contact@lapecheriedaurit.fr)

## La falaise aux Vautours

You will be able to observe the life of vultures on a giant screen! Enjoy 400m<sup>2</sup> of fun and interactive presentations to discover the birds of prey!

Phone : 05 59 82 65 49

Mail : [falaiseauxvautours@gmail.com](mailto:falaiseauxvautours@gmail.com)

Address : 64260 Aste-Beon

## Zoo d'Asson

Just over an hour from the campsite, Asson Zoo welcomes you and offers you the chance to meet and discover over 500 animals and a hundred different species!

Address : 6 chemin du Brouquet, 64800 Asson

Phone : 05 59 71 03 34

## Aquarium de Biarritz

Located at 1h30 from the campsite, the Biarritz Aquarium will welcome you through several animations (shows, workshops, birthdays...). You will be able to meet and discover marine animals up close!

Address : Esplanade du Rocher de la Vierge, 64200 Biarritz

Phone : 05 59 22 75 40

# Walk for all the family !

The campsite is located 1 hour from the 3 valleys of the Bearn: Barétous, Aspe, Ossau which have many possibilities. We present here some ideas of hikes and places that we particularly like. Do not hesitate to contact us at the reception for more information.

## Le Plateau du Bénou

Located in the Ossau valley at an altitude of 990 m and on the road to the Marie-Blanche pass, this site is ideal for hiking and mountain biking. In July, you will find an unmissable and traditional event, the transhumance (periodic transfer of cattle between summer and winter pastures). The Plateau du Bénou offers walks from different plateaus, such as :

### Les cercles de Pierres

This 3.7 km hike with a 200 m difference in altitude takes about 1h30.

You will be able to enjoy a breathtaking view of the Plateau du Bénou. You will also be able to observe the cromlechs (group of stones placed in a circle) built about 3,000 years ago.

### Isarbe, le miroir de l'Ossau

This lake is located at an altitude of 1400m and is one of the gates to the Pyrenees National Park! Enjoy many walks with your family:

- Tour des lacs d'Ayous hike
- Hike to the Plateau de Bious



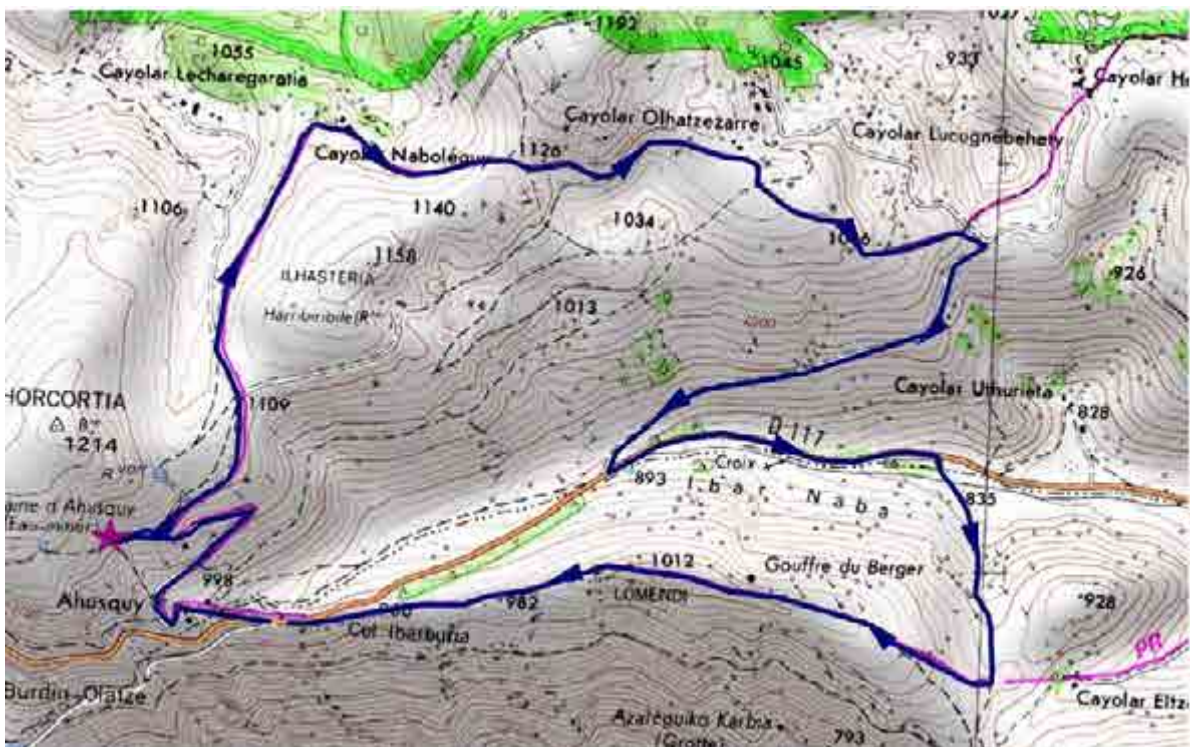
## Ahusquy, le massif des Arbailles



Enjoy the arid and tormented relief of the massif with the 8.7km long Ahusquy Pass walk, starting from the Ahusquy hostel, at the Ibarburia Pass.

You will be able to see the Pyrenees, the border with the province of Navarre, in Spain.

Here is the map of Le Col d'Ahusquy walk:



## Le Cirque de Lescun



Starting from Lescun and in the Aspe Valley, in the Pyrenees, the Cirque de Lescun is a high place of Pyreneanism.

Its famous mountains are famous for numerous hikes through the nature.

## Le Tour des Lacs d'Ayous



The start is at the Bious Artigues car park (get up early to make room).

Allow a good 6 hours. Don't miss the lakes of Ayous and its dreamy landscapes through many hikes! Below the map illustrating the hike to discover the lakes.



## Le plateau de Sanchèse

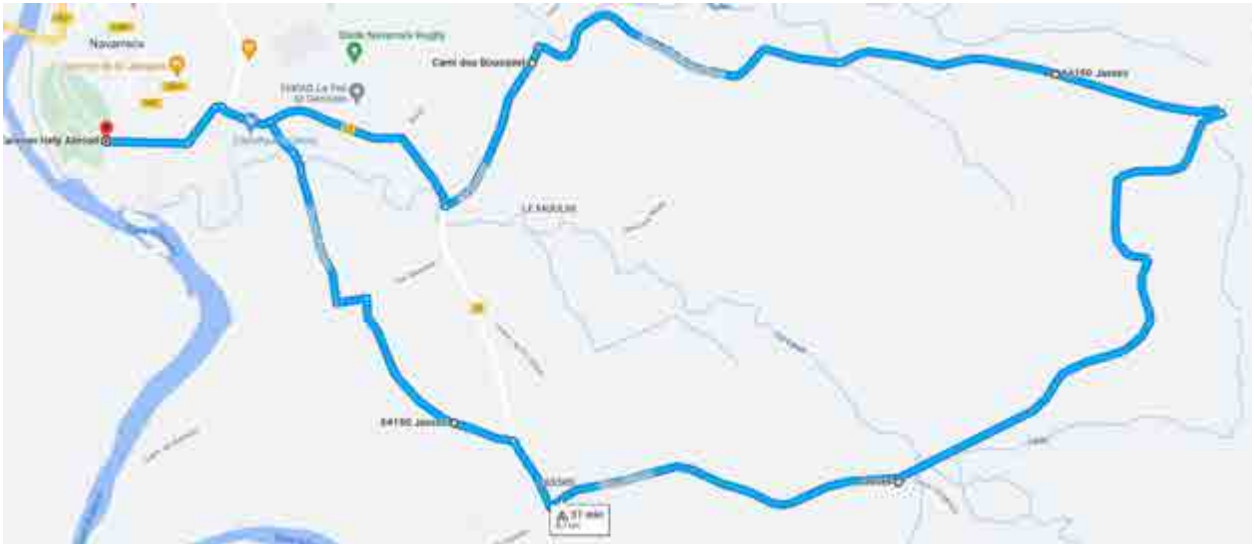
Starting from Lescun, this family walk will take you into the fresh air and help you discover the beauty of the mountains of the plateau. Discover the many waterfalls, streams and animals in the wild! This walk lasts 1 hour, it is easy and suitable for the whole family!

The distance covered is 5.7 km with a difference in altitude of 130 metres.



# Bike and walking tour

## 1/Walk from the campsite:



## 2/ A little further on:

30 minutes from the campsite, enjoy a walk with a breathtaking view of the Pyrenees.

Address : 1 Chem. d'Ossau, 64260 Buzy. Other walks are also available at the reception.

## 3/ Bike ride :

Enjoy an easy bike ride from the Beau Rivage campsite. You will pass through several villages such as Jasses, Dognen, Hôpital St Blaise and Gurs. You can visit the Gurs camp, one of the largest internment camps in France from 1939 to 1945, and the church of Hôpital Saint Blaise (a UNESCO World Heritage site). Other bike rides are available at the reception.

---



## Practical information

- The campsite's pizzeria is open in high season.
- The campsite swimming pool is open from 9am to 9pm.
- Fancy a game of table tennis, petanque, tennis? Come to the reception and let us equip you!
- Come and enjoy ice cream and drinks from the reception or the bar.
- The WIFI code is free! Take advantage of it.
- Clothes racks are available in the laundry room as well as an iron
- Loan of hairdryers at the reception.
- In location : An inventory of fixtures will be carried out on the day of your departure between 8am and 10am. You must go to the reception to inform us of the time of the appointment. We will return the deposit the same day after the inventory.
- The gate at the entrance is closed from 10pm to 7:30am.

## Other

The towns : the pretty, typically Basque town on the banks of the river Nive, Lourdes, his sanctuary and his cave...

Lindt Factory : Notice to all gourmets. The Lindt factory is only 30 minutes away from the campsite, discover the shop founded in 1845 and taste these chocolates, truffles and confectionery! Chocolates at reduced prices!

Address : 2 Avenue Mal de Lattre de Tassigny, 64400 Oloron-Sainte-Marie – Tél : 05 59 88 87 62

Las ventas (shops at Spanish border) : Enjoy the las ventas in Arnéguy only 1 hour away from the campsite. Address : 64220 – Shopping mall

Favourite in Spain: San Sebastian is located 2 hours from the campsite and is famous for its beaches, restaurants and old town! You can visit the Plaza de la Constitución, the old town, La Concha beach and the Donostia-San Sebastian aquarium!

Linge Basque household linen : Tissage Moutet, Basque household linen

Address : Rue du Souvenir français 64300 Orthez – France - Phone : 05 59 69 14 33

Mail : [contact@tissage-moutet.com](mailto:contact@tissage-moutet.com)

Lartigue : designer and weaver of Basque linen for the whole house!

Adresse : Rue du Souvenir Français, 64300 Orthez – Phone : 05 59 69 14 33

Espadrilles : Take advantage of traditional knowledge, handmade with natural and ecological products! Address : Zone artisanale, 64130 Mauléon - Phone : 05 59 28 28 48



We are interested  
in your opinion,  
so please leave one.

Thank you.

*The Beau Rivage  
camping team.*

